

# BRAN FOR GRASSHOPPERS

GRASSHOPPER INSECTICIDE  
AGRICULTURAL  
WHEAT BRAN INSECTICIDE

Guarantee: Carbaryl 2%

READ LABEL BEFORE USE  
KEEP OUT OF REACH OF CHILDREN



CAUTION POISON

REGISTRATION NO. 25815 PEST CONTROL PRODUCTS ACT  
IN CASE OF EMERGENCY, CALL DAY OR NIGHT COLLECT  
1-416-634-2359

Box 750

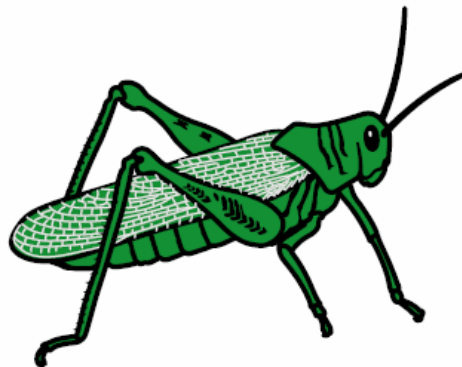
Manufactured by  
PEACOCK INDUSTRIES

Hague, Saskatchewan, Canada  
S0K 1X0

**NET CONTENTS 20 KG.**

For the control of grasshoppers in pastures, roadsides, forages,  
cereal crops and waste areas.

**WARNING:** May contain wheat.



GROUP

1A

INSECTICIDE



# BRAN FOR GRASSHOPPERS

## DIRECTIONS FOR USE

### FOR GROUND APPLICATIONS:

Apply 2-4 kg bait/ha broadcast evenly over the area to be treated for control of grasshoppers. The higher rate should be used for older grasshoppers or severe infestations.

### GENERAL DIRECTIONS:

Apply when pest emergence is at its peak and populations are above the economic threshold. Consult local agricultural authorities or company representative for further information on local economic thresholds and timing of application.

Repeat applications only as necessary but not more frequently than once a week during periods of heavy infestation and once every two weeks during moderate to low infestation.

Presence of product on flowering crops such as alfalfa and clover will not harm foraging honey or leafcutter bees.

<b>CROP</b>	<b>PH/livestock re-entry period (days)</b>
corn (field & sweet)	1
alfalfa, clover	2
beans	5
oats, rye, wheat	14
barley, sweet white lupin	28
canola	Treat only seedlings
field borders, headlands, rights-of-way, roadsides, wastelands	0
entry of beef cattle or other livestock to pastures, range lands or forage grasses	1
entry of dairy cattle to pastures or range lands, harvest of forage crops	2

Do not apply within 50 meters of sloughs, ponds, streams, dugouts or open water. Apply when winds are between 3-8 kph and do not favor drift.

Store apart from food and feeds. **To avoid accidental poisoning of livestock and pets:**

- 1) Do not transfer product to other containers. If excess product must be stored, keep bag tightly closed and store in places not accessible to animals or children.
- 2) Load application equipment at work site only! Do not load applicators in farm yards where animals, pets and children are likely to be exposed. Clean up spilled bait immediately.
- 3) Do not allow product to contaminate feed troughs or drinking water.

## **RESISTANCE-MANAGEMENT RECOMMENDATIONS**

For resistance management, please note that Eco Bran Grasshopper Insecticide Agricultural contains a Group 1A insecticide. Any insect population may contain individuals naturally resistant to Eco Bran Grasshopper Insecticide Agricultural and other group 1A insecticides. The resistant individuals may dominate the insect population if this group of insecticides is used repeatedly in the same fields. Other resistance mechanisms that are not linked to site of action but are specific for individual chemicals, such as enhanced metabolism, may also exist. Appropriate resistance-management strategies should be followed.

### **To delay insecticide resistance:**

- Where possible, rotate the use of Eco Bran Grasshopper Insecticide Agricultural or other Group 1A insecticides with different groups that control the same pests in a field. Avoid application of more than 4 and consecutive sprays of Eco Bran Grasshopper Insecticide Agricultural or other insecticides in the same group in a season.
- Insecticide use should be based on an IPM program that includes scouting, record keeping, and considers cultural, biological and other chemical control practices.
- Monitor treated pest populations for resistance development.
- Contact your local extension specialist or certified crop advisors for any additional pesticide resistance-management and/or IPM recommendations for the specific site and pest problems in your area.
- For further information or to report suspected resistance contact Peacock Industries at 306-225-4691 or [peacockwagner@sasktel.net](mailto:peacockwagner@sasktel.net)

## **PRECAUTIONS**

**KEEP OUT OF REACH OF CHILDREN. HARMFUL IF INHALED OR SWALLOWED.** Avoid breathing dust or vapour from bait. Use only in well ventilated areas. Do not take internally. May cause eye irritation. Avoid contact with eyes and skin. Wash thoroughly after handling and before eating or smoking. Avoid contamination of feed and foodstuffs. Keep away from heat, sparks and open flame.

If this pest control product is to be used on a commodity that may be exported to the U.S. and you require information on acceptable residue levels in the U.S., contact 1-800-375-4648 or [www.cropro.org/](http://www.cropro.org/)

## **FIRST AID INSTRUCTIONS**

If symptoms of poisoning occur seek medical or veterinary attention. If on skin, wash thoroughly with soap and water. If in eyes, flush with plenty of water for at least 15 minutes. If swallowed, induce vomiting immediately; get medical attention or call a poison control centre. Take container, label or product name and Pest Control Product Registration Number with you when seeking medical attention.

## **TOXICOLOGICAL INFORMATION**

Carbaryl is a moderate reversible cholinesterase inhibitor. Symptoms of poisoning are: anorexia (loss of appetite); nausea; vomiting; diarrhea; excessive salivation; pupillary constriction; bronchoconstriction; muscle twitching; convulsions; coma; respiratory failure. Do not use 2-PAM, opiates, or cholinesterase-inhibiting drugs. Atropine is antidotal.

## **DISPOSAL**

Make the supply container unsuitable for further use. Dispose of the container in accordance with provincial requirements. For information on disposal of unused, unwanted product, contact the manufacturer or the provincial regulatory agency. Contact the manufacturer and the provincial regulatory agency in case of a spill, and for clean-up of spills.

## **NOTICE TO USER**

This controlled product is to be used in accordance with the directions on this label. It is an offense under the Pest Control products act to use a control product under unsafe conditions.

## **NOTICE TO BUYER**

Seller's guarantee shall be limited to the terms set out on the label, and subject thereto, the buyer assumes the risk to persons or property arising from the use or handling of this product and accepts the product on that condition.